

LEGAN GROUP



Tim Chu (Hong Kong True Light College)

Venus Lau (Tai Kok Tsui Catholic Primary School (Hoi Fan Road))

30/5/2020

About Legan

Founded in 1992, Legan Group has established a formidable reputation as a leader in the data center industry.

CORE businesses ranging from end-to-end data centre solution, manufacturing sectors to business sectors:

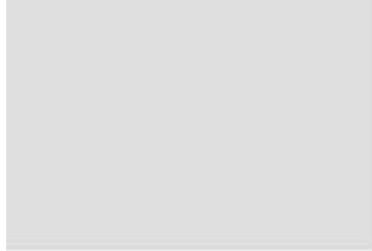
- Colocation data centre services & bandwidth connectivities;
- Advanced IT solutions including cloud infrastructure, Big data solutions & managed IT services;
- Design and building of mission critical environments mainly data centre, clean rooms, laboratories, hi-tech eco buildings and etc;
- Manufacturing and distribution of critical mission equipment



Legan's Mission

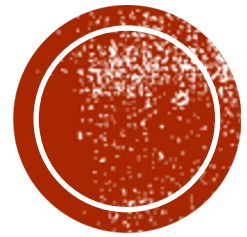
We are committed to create value and make a difference for our customers using our truly one-stop service & solution in engineering, construction and information technology.





Legan's Companies



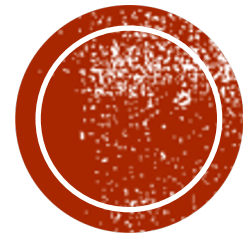


My Personal Experience

My reflection

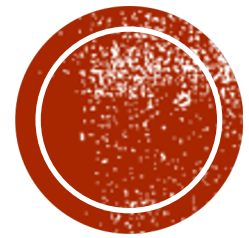
1. What pressure did the IT team members face?
1. How can I choose between delegation and micromanagement?
1. What is the comfort zone of the IT team members?





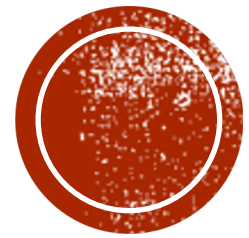
Shared Vision

What I learned from Legan



Teamwork

What I learned from Legan



A supportive and learning culture

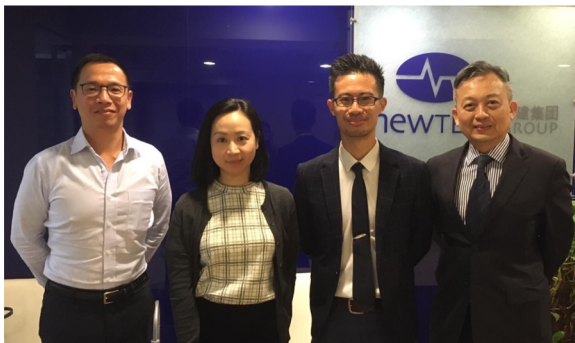
What I learned from Legan and

What I expect to do at my school

A GREAT TEAM:

*Views from
different companies
departments
positions*

- Tanky Yun (Legan - Executive Director – Corporate Development & Strategy)
- Mark Chun (Newtech – Executive Director – Head of Engineering)
- Chris Wong (Newtech - Senior Facility Manager)



A GREAT TEAM:

*Views from
different companies
departments
positions*

- Keeny Leung (OneAsia – Business Development Director – Sales)
- Jim Yeung (OneAsia – Senior Operations Manager)
- La Fong (OneAsia – Assistant Facility Manager)



Boss: Charles Lee



GOOD DECISION MAKER

2008	Newtech awarded AAA credit grade from the People's Bank of China
2007	Newtech Group opened Ho Chi Minh City office in Vietnam
2006	Innovatech Group came under Legan
2005	Newtech Group opened Bangkok office in Thailand
2002	The establishment of AsiaTone Limited
2001	Newtech Group opened South Asia office in Singapore , Shanghai and Chengdu in China
1996	Newtech Group opened Beijing office to serve the Northern China customers
1995	Newtech Group opened its first China office in Guangzhou
1992	The first member of Newtech Group established



GOOD DECISION MAKER

2015	<p>Legan sets up the Shanghai office in Free Trade Zone.</p> <p>Appcara Inc. came under Legan.</p>
2014	<p>OneAsia awarded Hong Kong ICT Awards 2014 ??Bronze Award</p> <p>PN Technology was established</p> <p>The establishment of Octagon and Yoho</p>
2013	<p>AsiaTone had its name changed to Outerspace Technology Limited to provide Hi-Tech Realty</p> <p>OneAsia awarded 2013 IT Excellence Award from PCMarket</p>
2012	<p>Macro-Station Network Limited was established</p>
2009	<p>OneAsia Group was established ; RC Group commenced operation</p> <p>Newtech Charity Fund was established for assisting the needy children and elderly people</p>



VISIONARY ENTREPRENEUR

1992

- Insightful, foreseeing trends
- Having a global mindset
- Ever-changing for the future development
- Inspiring: charity, society



SCHOOL LEADERSHIP



- See the future
- Students' future needs
- Directions for school development
- Understanding of the school, the global development and education trends

- Risk taking



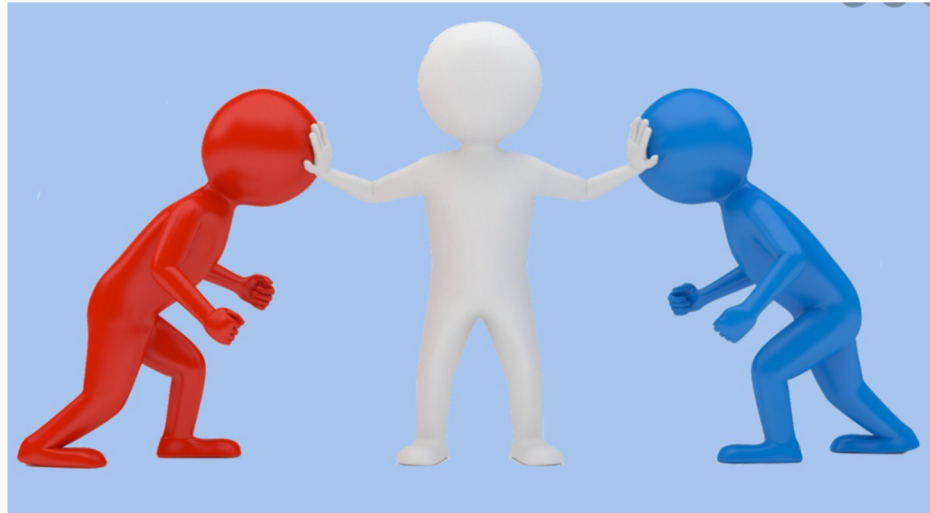
- Development of the school

Keeny: Difference between
local students and
oversea students



VERY NICE PERSON

- Contributions to the society
- Nice to people (conversation, facial expression)
~ice cream gathering, festive present giving, voluntary work
- Resolve conflict, help solve problems
- Trust, encourage staff to try, macro management



ETHICAL ENABLER

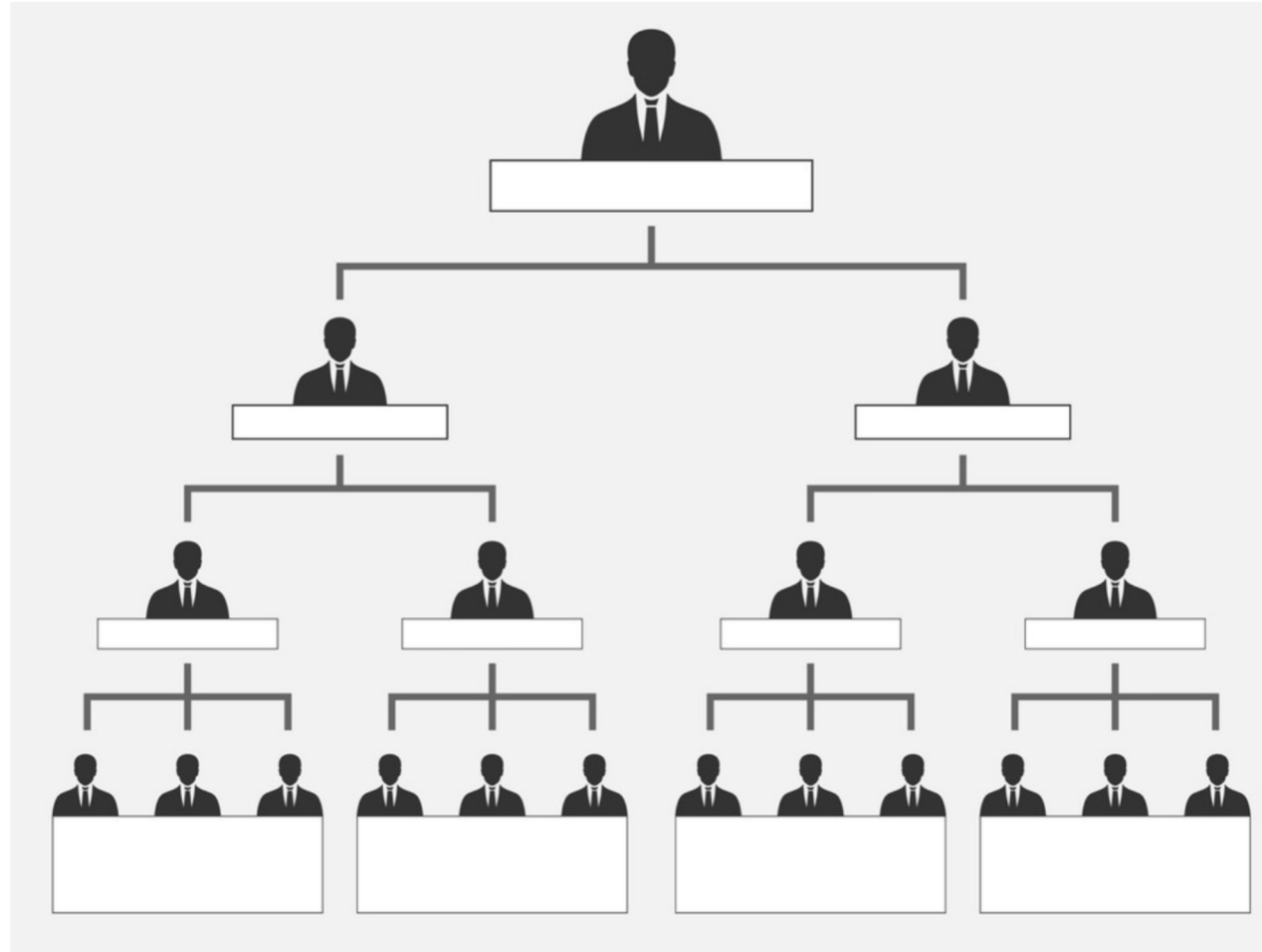
- Role model of high moral character
- Positive values and attitudes in daily practices
- Whole-person development



BOSS

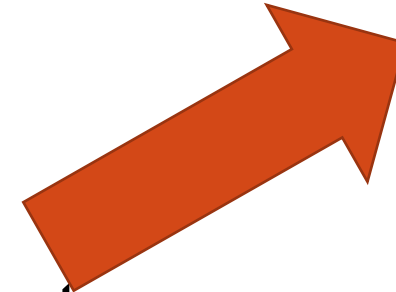


A TEAM OF LEADERS



ATTRIBUTES OF LEADERS

Actualise
Beliefs



- Honest (constructive feedback)
- Expressive / communicative – staff and customers
~face problems, avoid problems
- Responsible (Mark: Leaders should do more.)
- Positive / encouraging (different tasks)
- Helpful with actions (case: tidying up)
- Fair (benefits, appraisal: fact based, don't judge a person by others' comment)



SCHOOL LEADERSHIP

- Set a good example
- Cultivate positive environment
- Maintain whole-person development of teachers and students



MANY THANKS

