



# PROGRAMME FOR LEADERSHIP ENHANCEMENT FOR SERVING VICE-PRINCIPALS

Mentor: Dr Yau  
Mr Kwan Chi Kuen  
Ms Wong Ling Yan

# Wofoo Social Enterprises - Mission & Vision

## Core Values

- Empathy, Respect & Harmony
- Human-centred
- Individuals > Family > Society

## Vision

- Cultivate a generation of responsible citizens
- Innovation in social services
- Effective use of social resources for quality services
- Social harmony

Diversified Services  
from young to old



# Activities



Date	Learning Programmes
12/2	Meeting with Dr Joseph Lee at Wofoo Headquarters <b>(Themes: Community Projects, Wofoo Plastics, Crisis Management, HR Management)</b>
25/2	Visiting Warehouse - 蒲窩青少年中心 <b>(Theme: Branding &amp; Fundraising)</b>
10/3	Visiting WF Joseph Lee Primary School <b>(Theme: School Reform)</b>
27/4	Zoom Meeting with Miranda Ng <b>Grace Healthcare Ltd (頌恩護老院)</b>
8/5	Farewell Zoom Meeting with the Director, Ms Christina Maisenne Lee







# Ethical Enablers

## 以德潤才的躬行者



樹立以德修身的典範，實踐教育價值觀，促進教師和學生的成長及均衡發展。

Exemplify ethical understanding and actualize educational values to foster growth and balanced advancement of teachers and students.

### ◦ CEO : Role Model



# Ethical Enablers

## 以德潤才的躬行者



樹立以德修身的典範，實踐教育價值觀，促進教師和學生的成長及均衡發展。

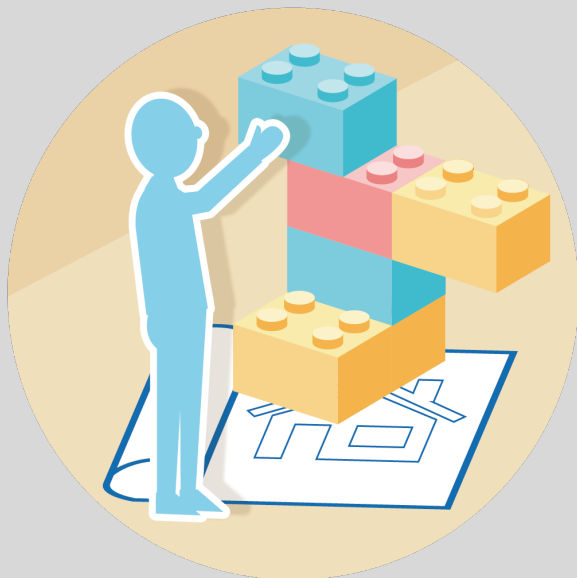
Exemplify ethical understanding and actualise educational values to foster growth and balanced advancement of teachers and students.

## Insights/Reflections

- Role Model
  - How to be a role model to influence other teachers?
- Core Value? (人和家富 民和國富)
  - The “What” question
  - The “How” question
    - How to communicate within the hierarchy?
    - How to implement?
    - School Motto: What & How question
- To Do:
  - Integrate School Value in House Activities

# Versatile Architects

## 博學啟思的建策者



締造機構文化及條件，以塑造學校成為追求卓越、敬業樂群及好學敏求的學習型組織，促使教師成為知識共建者，積極推動變革，培育多元人才，成就明日棟樑。

Generate organisational culture and conditions to foster schools as vibrant learning organisations with professional excellence and collegiality that develop teachers as co-constructors of knowledge, proactive agents of change and cultivators of multiple talents and future leaders.

## Insights

- School/Company Culture
  - Via hidden curriculum /school env.
- School Reform/Change Mgt
  - Role of external agents
  - Research based?
  - Rapport building / Collegiality
- Always think about these:
  - (1) What kind of students are we nurturing?
  - (2) What should the school teach?
  - (3) How to engage teachers in the education process and how to achieve professional growth?

## To Do:

Redefine the role of the Staff Development team



# Visionary Edupreneurs

## 高瞻遠矚的創建者



體現全球視野，前瞻未來，以實踐學校願景，貫徹教育使命及價值；積極面對變革和逆境，敢於開拓與創新，致力推動學校持續進步，以促進香港的未來發展。

Embody a global mindset and envision the future when actualising the school vision, mission and values, and embrace transformational changes and adversity with entrepreneurial spirit when promoting continuous school improvement for the future development of Hong Kong.

## Insights

- Community School
  - Who are the stakeholders of the school?
  - How the concept related to the core value?
  - Can we have a BIGGER picture?
- Cross-over
  - Subject crossover - Social service/ LS/Arts
  - Sector crossover - How to seek external resources / collaboration opportunities to enhance the education schools provide
- Crisis Management

# Visionary Edupreneurs

## 高瞻遠矚的創建者



體現全球視野，前瞻未來，以實踐學校願景，貫徹教育使命及價值；積極面對變革和逆境，敢於開拓與創新，致力推動學校持續進步，以促進香港的未來發展。

Embody a global mindset and envision the future when actualising the school vision, mission and values, and embrace transformational changes and adversity with entrepreneurial spirit when promoting continuous school improvement for the future development of Hong Kong.

## Reflections – What's next after pandemic

- Coping with future challenges / uncertainties
  - Changing pedagogy – Blended learning
  - Identifying the needs of people in the 21st century – changing employment landscape and skill gap
  - Grooming the future-ready generation –  
Attitude  
→ Empathy, Positive psychology  
Skills  
→ Discernment, e.g. Fake news  
→ IT – etiquette & competence
- Creating an entrepreneurial environment for teachers' "**ednovations**"

# Summary

- Flexibility
- Consistency (with the core value)
- Professional excellence – providing “Future-ready” education



# Acknowledgement

- Wofoo Social Enterprise -  
Dr Joseph Lee, Ms Christina Maisenne Lee and Ms Susan Lee
- EDB & Education University
- Dr Brian Yau